

PVI-USB-RS485_232 – rev.2



USB DRIVER INSTALLATION PROCEDURE FOR USB-RS232/RS485 CONVERTER

This document describes the driver installation procedure to allow use of the **PVI-USB-RS485_232 – rev.2** converter with Power-One Aurora inverters. In order to correctly install the device and obtain the highest performance, follow the procedure provided below.



The **PVI-USB-RS485_232 – rev.2** converter is suitable for use with the following Aurora software:

- **Aurora Communicator (rel. 2.8.x or later)** – *String or central inverters monitoring;*
- **Aurora Installer (rel. 3.1.4 or later)** – *String inverters configuration and monitoring;*
- **Aurora CVI Central (rel. U.0055 or later)** – *Central inverters configuration and monitoring;*
- **Aurora Stringcomb Installer (rel. U.0045 or later)** – *String combiner boxes configuration and monitoring.*

The above listed software and associated documentation are available from the Power-One Italy S.p.A. FTP server, which can be accessed via the procedure listed in Annex A.



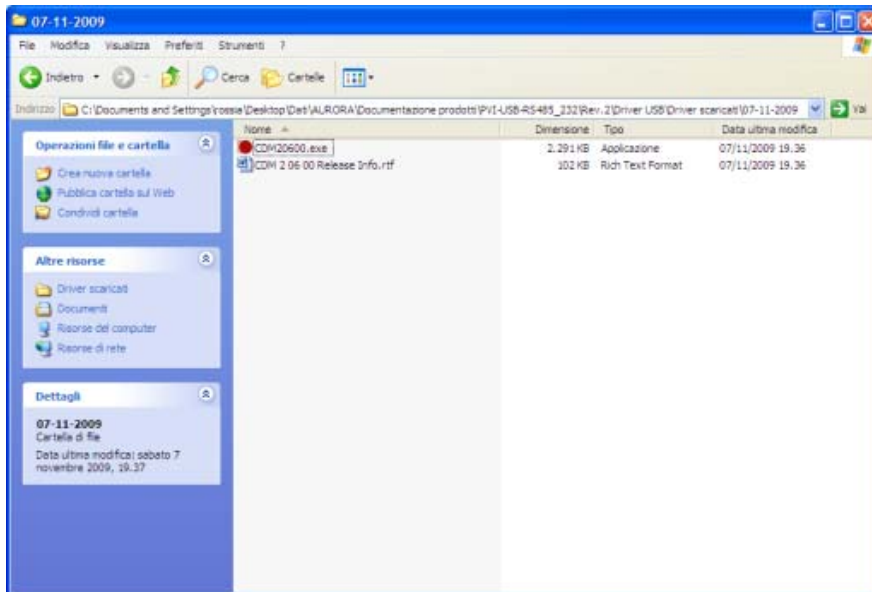
This document describes the installation procedure for use with Windows XP operating systems; however the driver provided is compatible with other Microsoft operating systems. In addition the USB microcontroller manufacturer's website has available drivers for different operating systems. Please follow the link below for additional information and downloads:

<http://www.ftdichip.com/Drivers/VCP.htm>

USB driver installation procedure for **PVI-USB-RS485_232 – rev.2.**

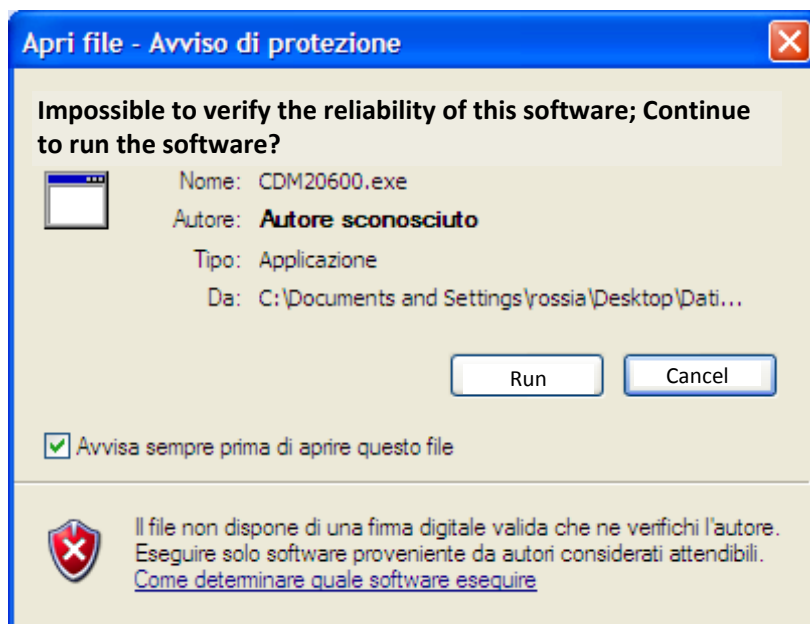
Note: the following procedure is associated with driver version 2.06.00, released by the USB microcontroller's manufacturer on 03/11/2009. To download the latest available driver release its compatibility table, please refer to the table at the end of the following procedure.

1. Obtain the install utility file from the FTP site (per Annex A)
Highlight file **CDM20600.exe** and double-click to execute

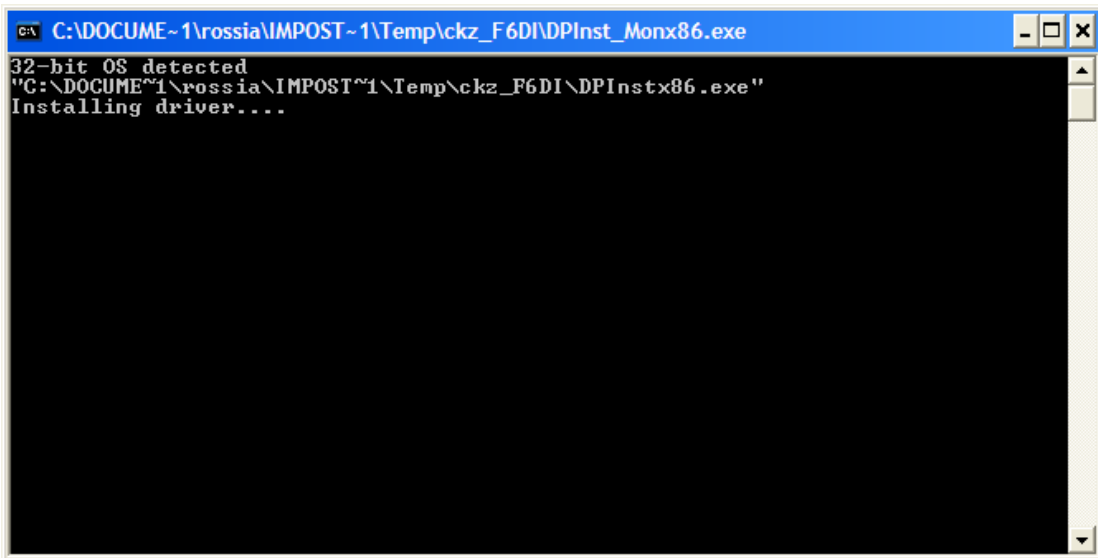


2. Click on "**Run**"

Note: This screen may or may not appear depending on version of operating system installed

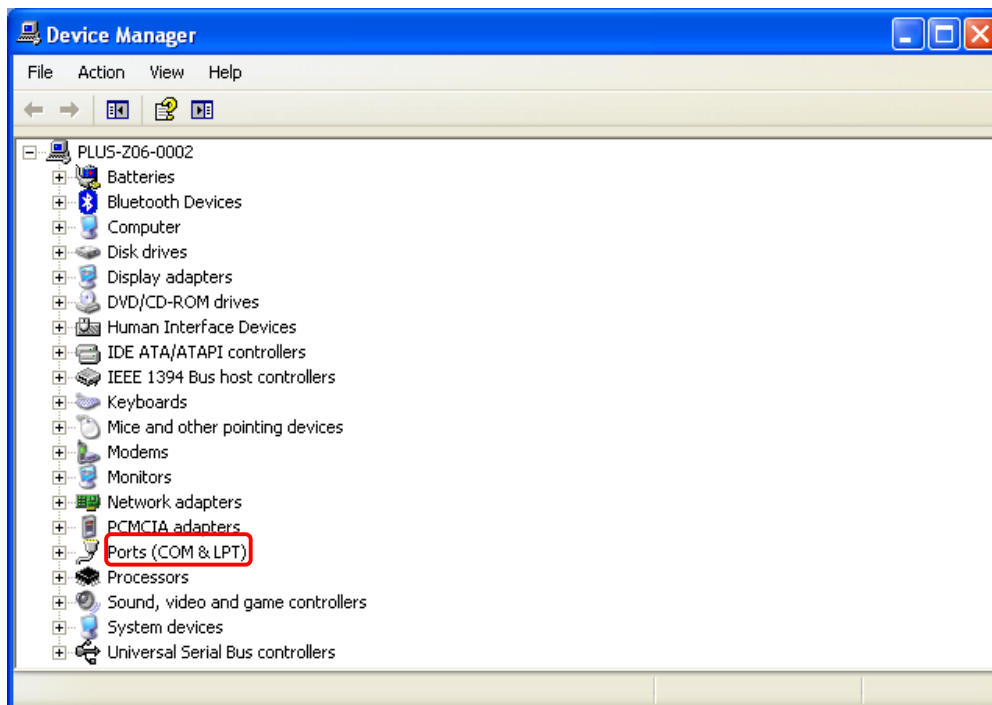


3. Wait for the completion of USB driver installation:

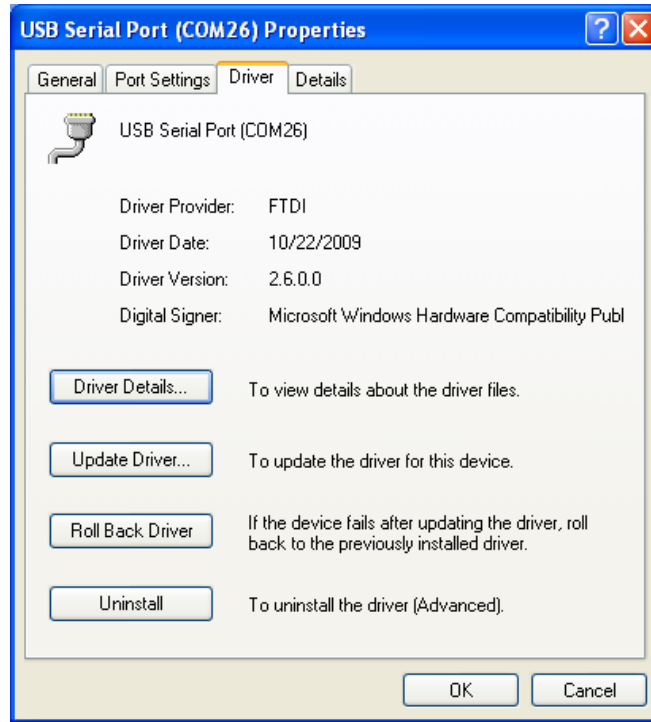


4. Connect the device to a USB port on the PC using the included cable.

To determine which COM Port is assigned to the converter, enter the System Manager.



5. Double click on the COM port assigned to the USB converter where it's possible to check the version of the installed driver.



COMPATIBILITY TABLE – DRIVER Ver. 2.06.00

Operating System	Device	Driver Version	Release Date
Windows Server 2008 R2			
Windows 7	FT2232H		
Windows 7 x64	FT4232H		
Windows Server 2008	FT232R		
Windows Server 2008 x64	FT245R		
Windows Vista	FT2232	2.06.00	03 November 2009
Windows Vista x64	FT232B		
Windows XP	FT245B		
Windows XP x64	FT8U232AM		
Windows 2000	FT8U245AM		
Windows Server 2003			
Windows Server 2003 x64			

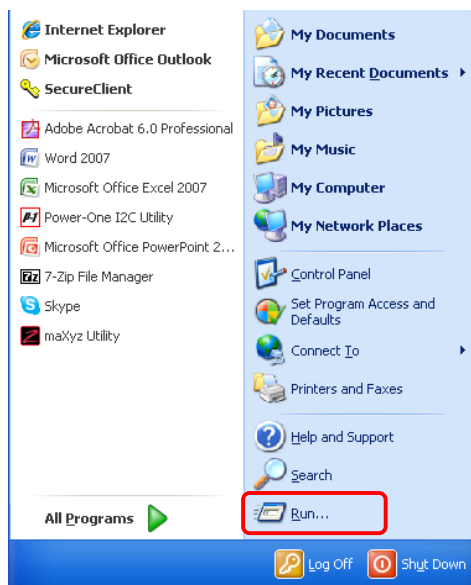
Note: PVI-USB-RS485_232 is based on **FTDI FT232R** USB microcontroller.

Annex A – Power One Italy S.p.A. server FTP access procedure.

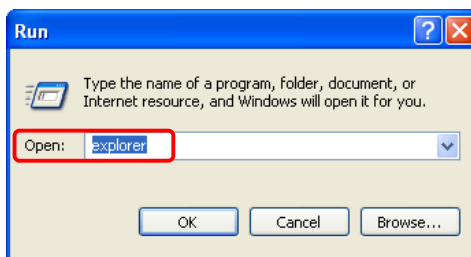
1. From computer desktop, click “start” button:



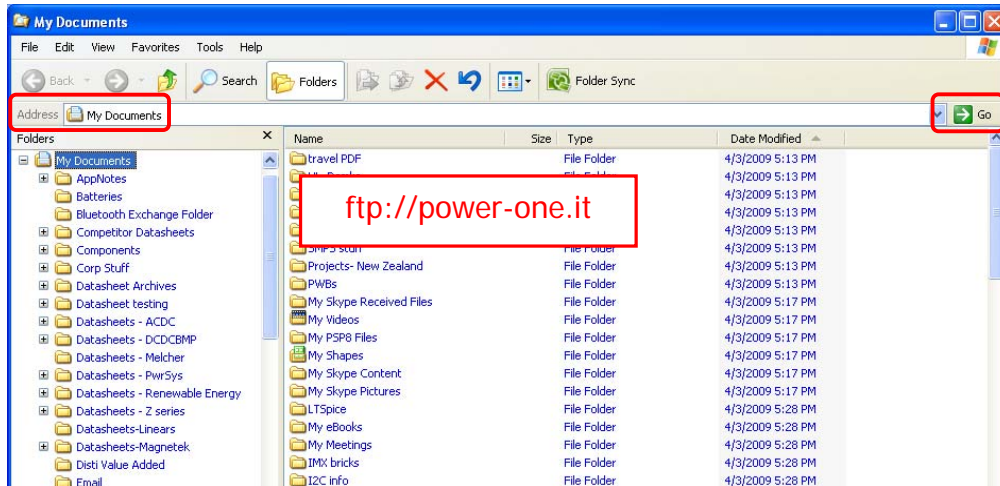
2. From the resulting menu, select “Run...”:



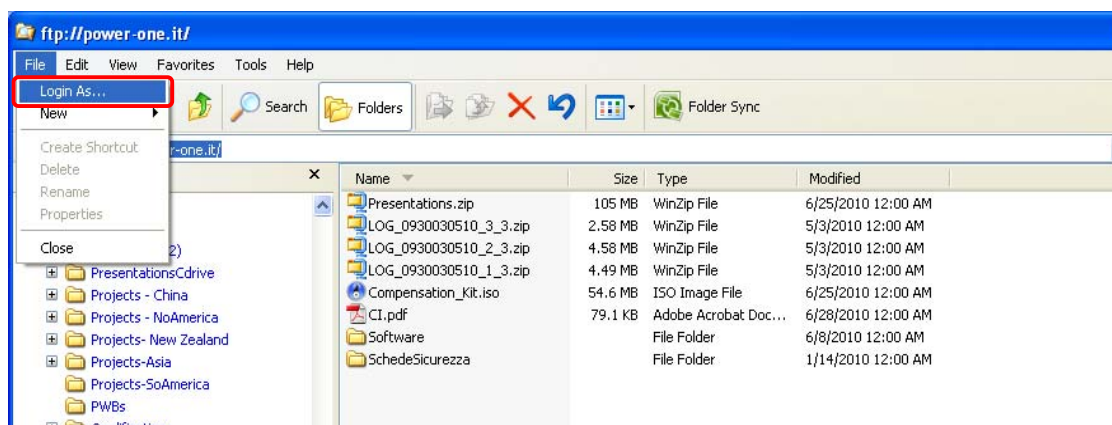
3. Type “explorer” into the **Open** field and click on OK:



4. In the address bar, enter: *ftp://power-one.it* and click "Go":



5. From the "File" menu, select "**Log in As...**":

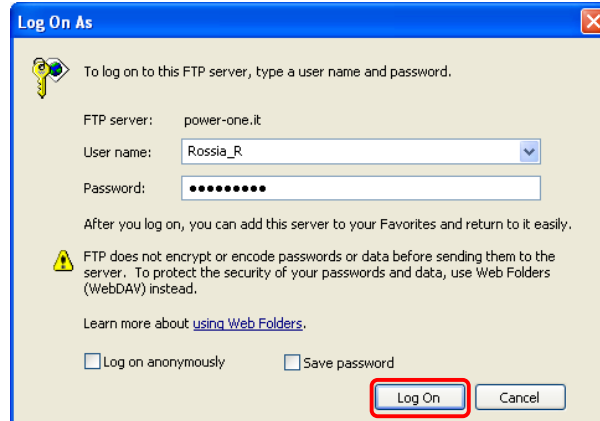


6. Enter the username and password as following:

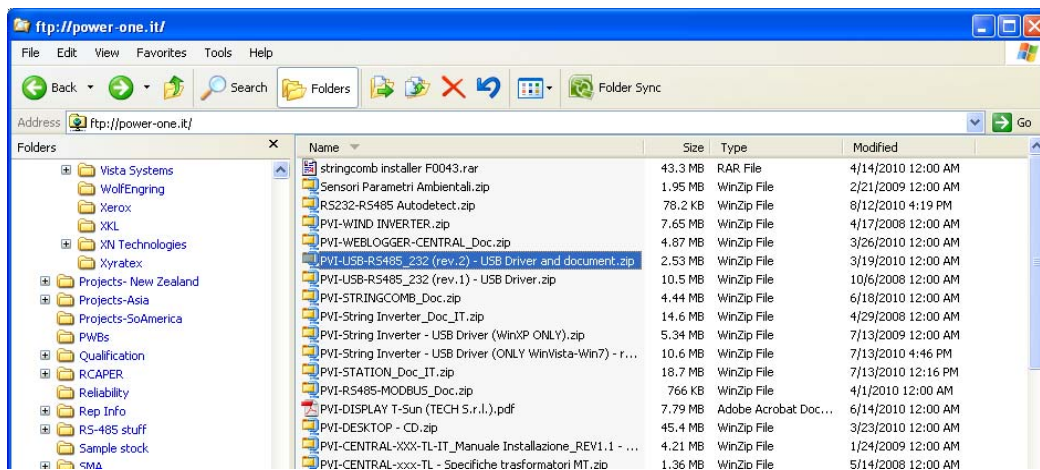
Username: Rossia_R

Password: guest01

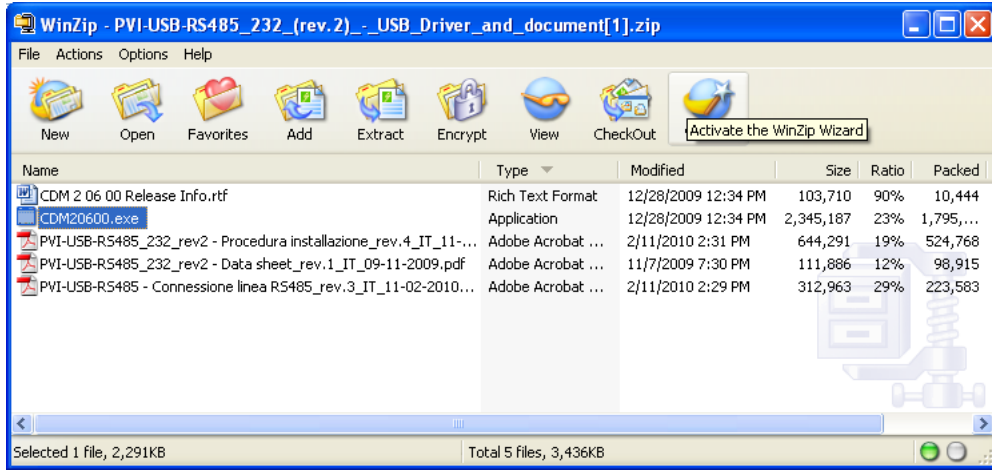
Click "Log On"



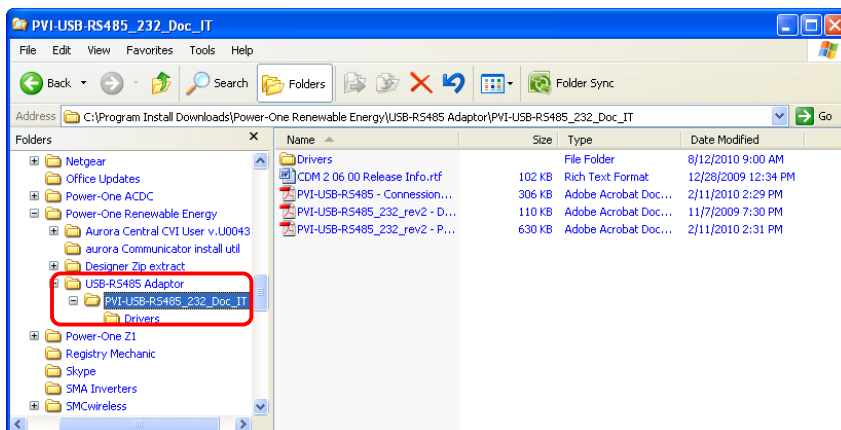
7. In resulting directory screen locate archive file: **PVI-USB-RS485_232 (rev.2)**



8. Double click on the file icon to open the archive



9. Use Extract command to extract contents of the archive to a file location defined by user.



10. Enter Driver folder to access driver installation executable
Continue with Driver installation procedure at beginning of document

